

SOUTHERN SUDAN COMMISSION FOR CENSUS STATISTICS AND EVALUATION (SSCCSE)



PRESS RELEASE / 3rd February 2009

CONSUMER PRICE INDECES (CPI) FOR January 2009

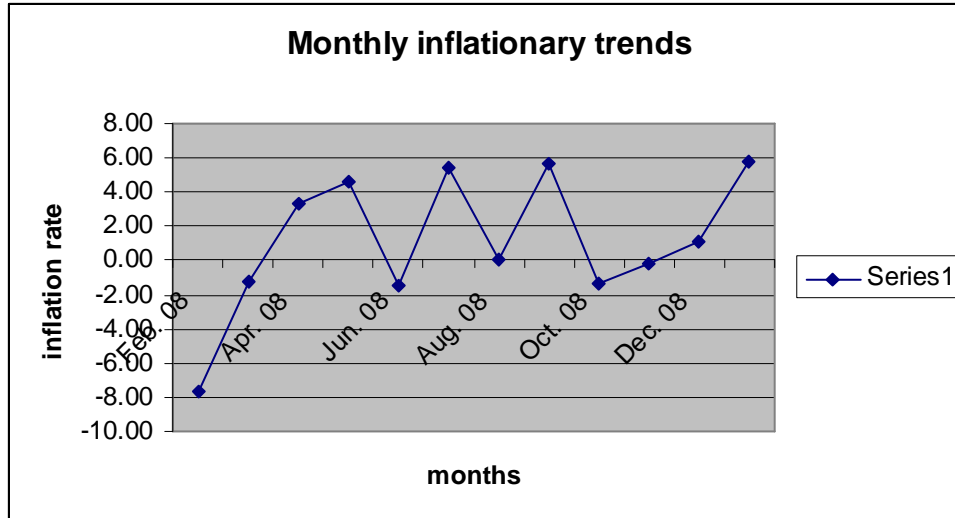
Highlights/ Summary observations

Month-on-month Inflation

The Monthly Juba Headline Consumer Price Index (CPI) increased by 5.77% in January 2009.

The monthly headline inflation rate for the month of January 2009 rose by 5.77% compared to 1.06% in December 2008. The increase in the all-items-index was on account of price increase in bread and cereals particularly maize flour, wheat flour, bread. Fish prices also rose considerably. Other notable price increases were for bottled beer.

The following line graph shows monthly inflationary trends for the last one year from January 2008 to January 2009.



Food Prices up by 10.75% in January 2009

The Juba centre [SSCCSE collects prices from several cities in Southern Sudan and these cities are referred to as centres] registered general monthly price increases of food items especially cereals and fish. Maize flour, rice, wheat flour and bread rose 56.73%, 18.75%, 12.5% and 20.94% respectively.

This was due, in part, to the dry season in many parts of Southern Sudan and the region.

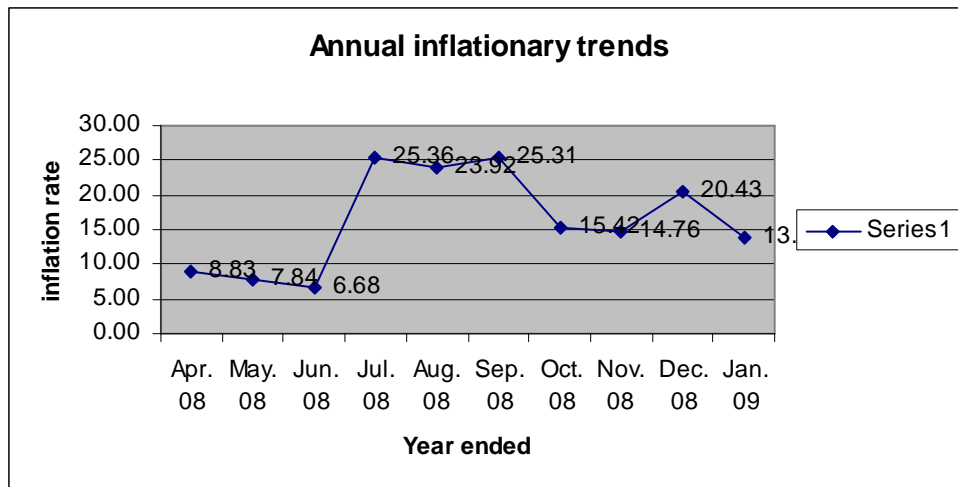
Other Price Movements

Other notable changes in prices were in transport where the price of petrol and diesel fell.

Annual Inflation

The annual percentage changes in the index [annual inflation rate] for all items were 8.80%, 7.84%, 6.68%, 25.36%, 23.92%, 25.31%, 15.42%, 14.76%, 20.43% and 13.87% at the month-ends of April, May, June and July, August, September, October, November, December 2008 and January 2009 respectively.

The following shows annual inflationary trends since April 2008.



Juba Monthly Consumer Price Index (CPI) Changes by COICOP Group

| Monthly Changes, % | Feb. 08 | Mar.08 | Apr.08 | May.08 | Jun.08 | Jul.08 | Ag.08 | Sep.08 | Oct.08 | Nov.08 | Dec.08 | Jan.09 |
|------------------------------------|--------------|--------------|-------------|-------------|--------------|-------------|-------------|-------------|--------------|--------------|-------------|-------------|
| Food & non alcoholic beverages | -10.60 | -3.83 | 2.89 | 4.88 | -1.40 | 7.80 | -2.50 | 13.27 | -3.98 | 1.61 | 1.16 | 10.75 |
| Alcoholic beverages & Tobacco | 0.21 | 2.03 | -4.25 | 6.48 | -3.17 | 0.00 | 0.20 | 0.71 | 2.93 | -1.42 | 22.12 | -18.81 |
| Housing, water,electricity,gas etc | -5.92 | 10.24 | -2.72 | 7.07 | -5.20 | 3.88 | 3.96 | -7.91 | 1.76 | -2.35 | 2.01 | 0.82 |
| Furnishing & household equipmts. | 2.61 | 6.12 | -2.23 | 1.98 | 2.21 | -1.66 | 0.54 | 4.76 | 0.69 | -6.71 | 7.62 | -3.20 |
| Transport | 5.51 | 0.00 | 0.00 | 5.22 | 0.00 | 0.00 | 0.00 | -4.96 | 13.05 | -6.93 | -4.96 | -5.22 |
| Recreation & Culture | 0.00 | 0.00 | 0.00 | 0.00 | 0.00 | 0.00 | 0.00 | 33.99 | 1.04 | 2.92 | -1.92 | -1.95 |
| Restraunts and Hotels | 1.23 | -1.27 | -4.10 | 0.89 | -1.47 | 0.00 | 3.41 | 4.06 | 1.19 | 0.06 | -0.73 | -4.19 |
| Miscellaneous goods & services | -7.14 | -10.86 | 34.28 | -0.67 | 3.26 | 2.89 | 8.19 | -7.42 | -0.24 | -1.61 | -6.92 | 3.70 |
| ALL ITEMS | -7.64 | -1.21 | 3.38 | 4.58 | -1.51 | 5.38 | 0.08 | 5.65 | -1.40 | -0.18 | 1.06 | 5.77 |

Okello Gilo Boya

For: Director/Economic Statistics-SSCCSE